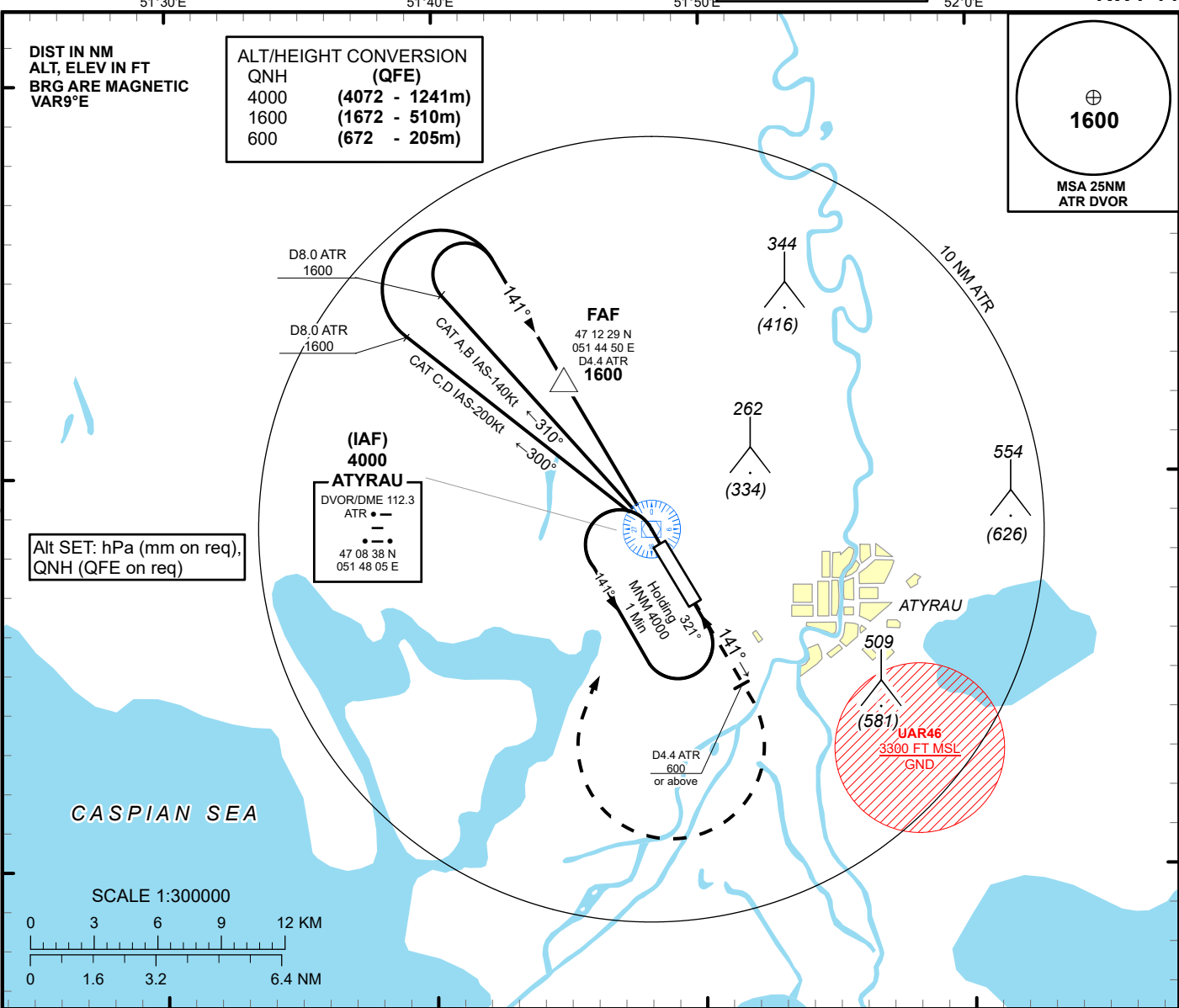


INSTRUMENT  
APPROACH  
CHART - ICAO

AERODROME ELEV -72 FT  
HEIGHTS RELATED TO  
AD ELEV

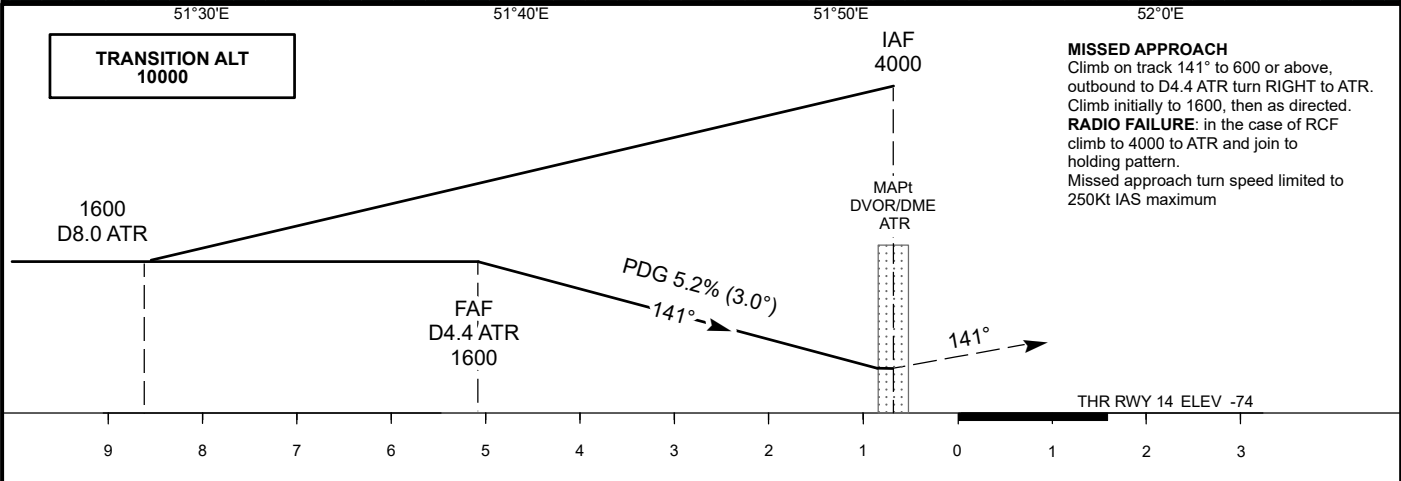
ATYRAU TOWER 118.1  
ATYRAU ATIS (EN) 127.4  
ATYRAU ATIS (RU) 126.6

ATYRAU  
VOR/DME Z  
RWY 14



TRANSITION ALT  
10000

**MISSED APPROACH**  
Climb on track 141° to 600 or above, outbound to D4.4 ATR turn RIGHT to ATR. Climb initially to 1600, then as directed.  
**RADIO FAILURE:** in the case of RCF climb to 4000 to ATR and join to holding pattern.  
Missed approach turn speed limited to 250Kt IAS maximum



Aircraft Category		A	B	C	D	DIST to THR	NM	5.1	4	3	2	1	
Straight-in Approach OCA/H						DME ATR	NM	4.4	3.3	2.3	1.3	0.7	
	VOR/DME	210(280)	210(280)	210(280)	210(280)	ALTITUDE	FT	1600	1249	930	612	293	
						HEIGHT	FT	(1672)	(1321)	(1002)	(684)	(365)	
Aerodrome Operating Minima MDH ft x RVR (CMV)	VOR/DME												
						GS	Kt	80	100	120	140	160	180
						Desc.Rate ( 5.2%)	ft/min	420	530	630	740	840	950
						FAF-MAPt (4.4 ATR)	min:sec	3:20	2:40	2:13	1:54	1:40	1:29

ATYRAU  
VOR/DME Z

AERONAUTICAL DATA TABULATION

VOR/DME approach to RWY14 from ATR DVOR/DME	
Fix/point	Coordinates
(IAF) DVOR/DME ATR	47° 08' 38,20"N 051° 48' 05,40"E
(FAF) D4.4 ATR	47° 12' 28,62"N 051° 44' 50,14"E
THR RWY 14	47° 08' 01.45"N 051° 48' 36.66"E
Final approach descent angle is 3.0°	